

ALAMANDA
P O L Y M E R S

☎ : 877-257-6597

☎ : 256-489-4529

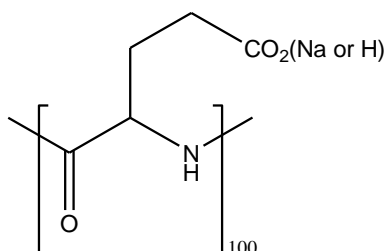
contact@alamanda-polymers.com

Specification Sheet

Chemical name: poly(D-glutamic acid sodium salt)

CAS number: 30811-79-1

Catalog item: PDE₁₀₀, average MW 15000



Catalog number: 000-DE100

Appearance	White to faint-yellow solid
Solubility	Clear solution at 50 mg/mL of water
Identify by NMR	Conforms
Quantitative analysis (%)	Na=11-15
PDI by GPC	1.00-1.20
MN by NMR	13600-16600
DP _n by NMR	90-110