

ALAMANDA
P O L Y M E R S

☎ : 877-257-6597

☎ : 256-489-4529

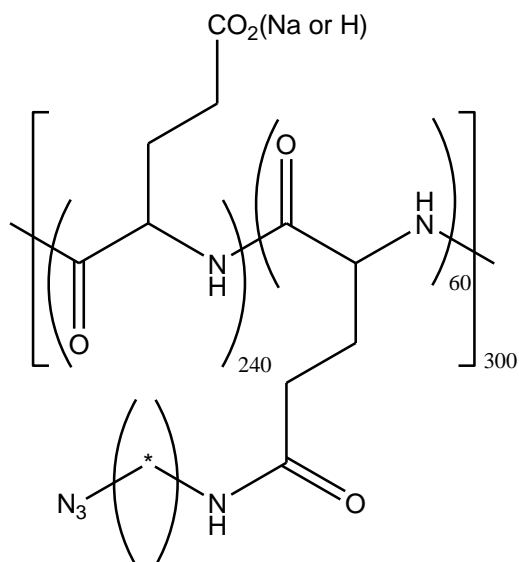
contact@alamanda-polymers.com

Specification Sheet

Chemical name: poly(L-glutamic acid sodium salt)-graft-(N-azidoalkyl)

CAS number: unknown

Catalog item: PLE₃₀₀-g-AZ₂₀, average MW 56000



Catalog number: 000-E300-g-AZ020

Appearance	White to faint-yellow solid
Solubility	Clear solution at 50 mg/mL of water
Identify by NMR	Conforms
PDI of starting PLE by GPC	1.00-1.20
MN by NMR	49500-62800
DP _n by NMR	270-330
Azido substitution (%)	18-22