

**ALAMANDA**  
P O L Y M E R S

☎ : 877-257-6597

☎ : 256-489-4529

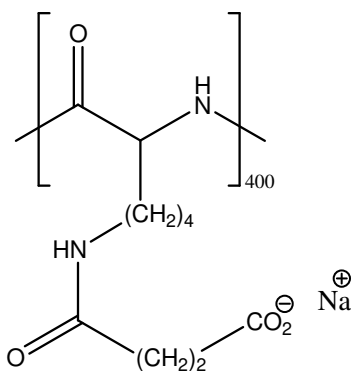
✉ contact@alamanda-polymers.com

## Specification Sheet

Chemical name: poly(L-lysine succinylated)

CAS number: unknown

Catalog item: PLKS<sub>400</sub>, average MW 100000



Catalog number: 000-KS400

Appearance	White to faint-yellow solid
Solubility	Clear solution at 50 mg/mL of water
Identify by NMR	Conforms
PDI by GPC	1.00-1.20
MN by NMR or LS	90000-110000
DP <sub>n</sub> by NMR or LS	360-440